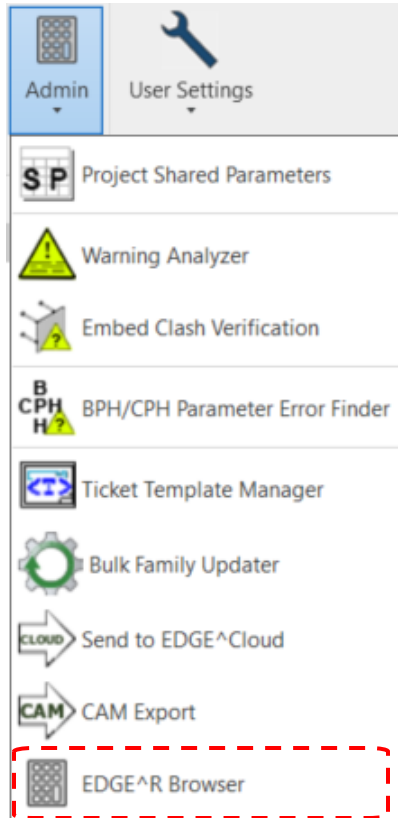


# Admin Tools: EDGE^R Browser



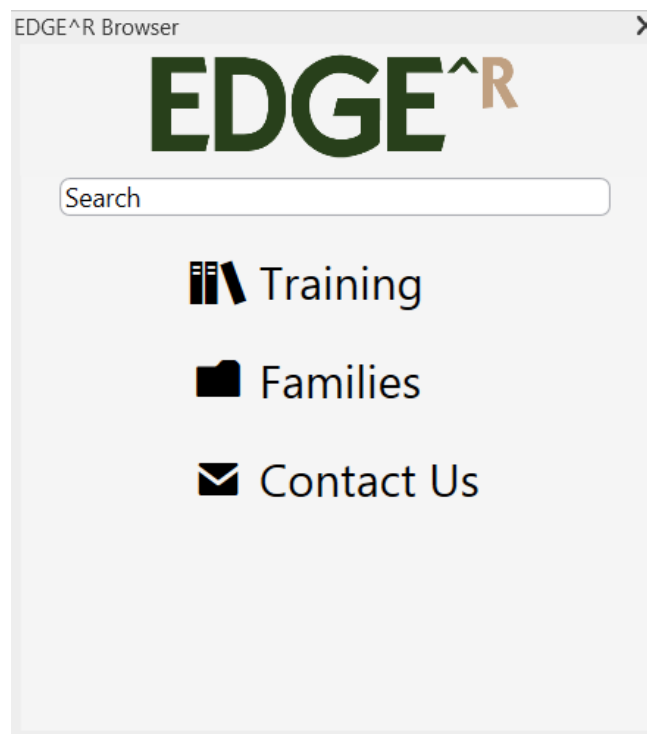
## Programmed Result of Tool:

This EDGE^R Browser is designed as a repository for any EDGE^R related training materials and families. With the Browser, the user will be able to view training videos and manuals, load families into the current project, and search for relevant materials.

The Training option on the main menu allows the user to browse various training manuals and videos. These videos and manuals can be viewed directly within the EDGE^R Browser. Additionally, the user can pop out videos in order to view them while browsing other content or download the videos for later use.

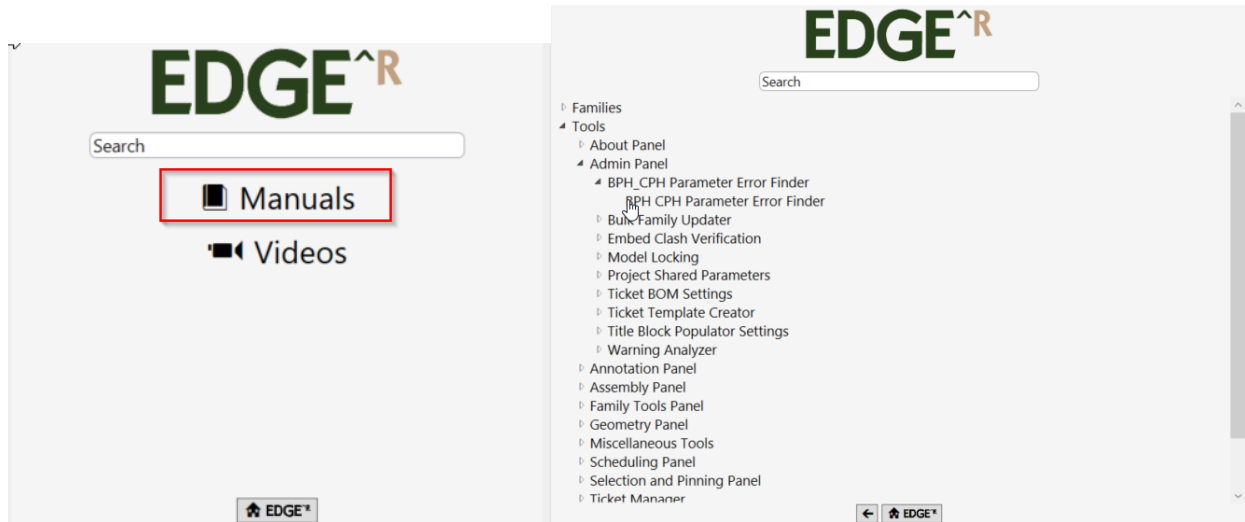
The Families option on the main menu allows the user to browse a library of EDGE^R Families and either load them into the current project or download the family for later use.

The Contact Us option provides users with different means in which to contact EDGE^R staff if they need additional help.

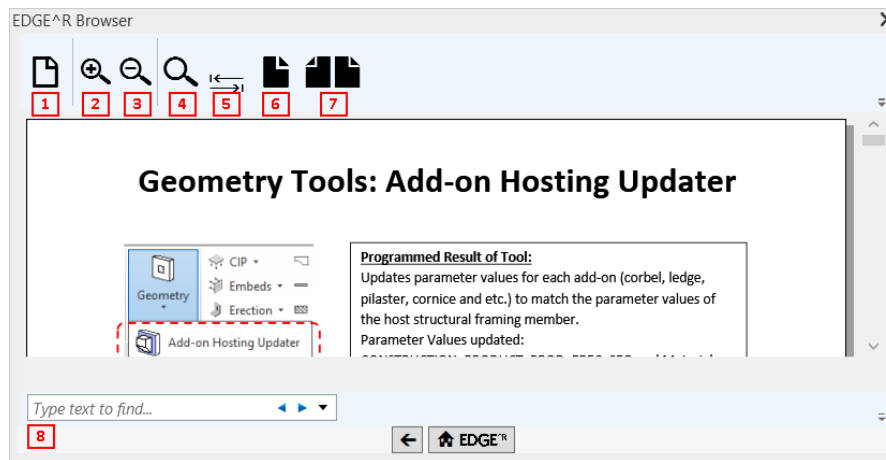


# Admin Tools: EDGE^R Browser

## Training Manuals:



By selecting Manuals within the Training menu, the user can view training manuals for EDGE^R tools and families. To view a manual, simply expand the relevant category and click on the desired training manual (indicated by the mouse cursor changing to a selection icon).

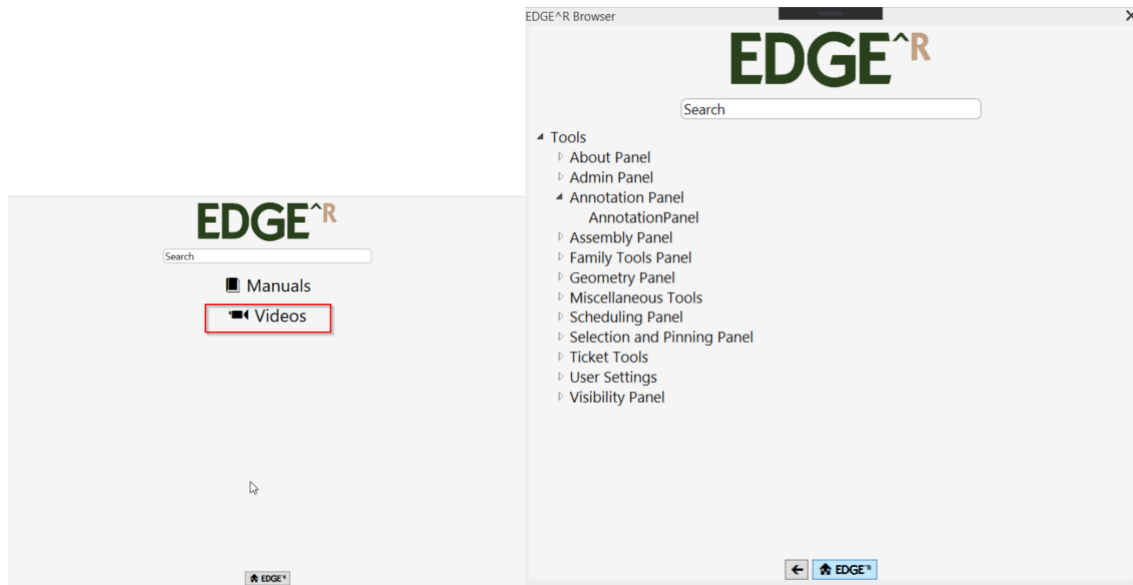


- 1) Print: Prints the current training manual
- 2) Zoom In
- 3) Zoom Out
- 4) Zoom Full: Displays the full size of the document
- 5) Fit to Window: Fits the document to the currently available window size.
- 6) Display One Page: Fits the document to one display page
- 7) Display Two Pages: Fits the document to two display pages
- 8) The Search Bar allows the user to type in a term they wish to find within the document.

Additionally, the Back button will take the user back to the previous window and the Home button will take the user back to the Main Menu.

# Admin Tools: EDGE^R Browser

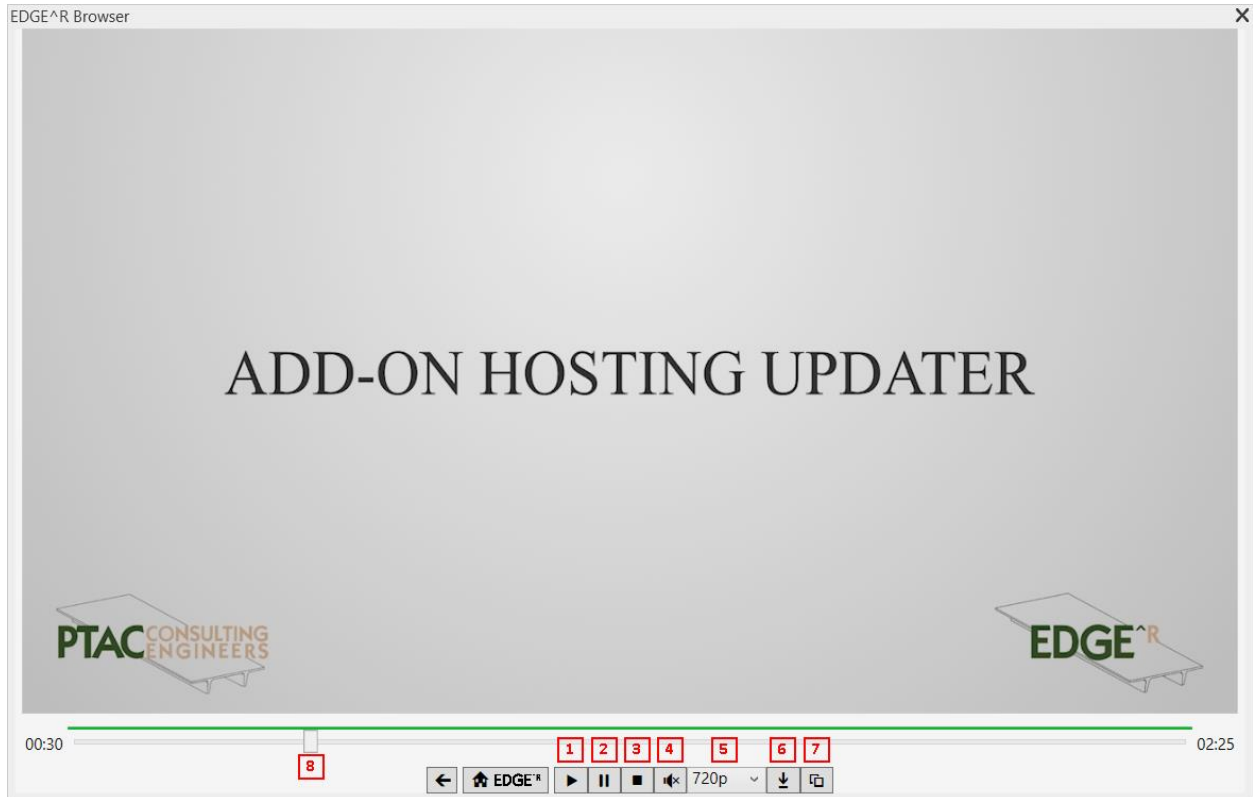
## Training Videos:



By selecting Videos within the Training menu, the user can view a wide variety of training videos. To view a video, simply expand the relevant category and click on the training video (indicated by the mouse cursor changing to a selection icon). By default, all videos are displayed in 720p; however, 480p and 1080p options are also available for viewing.

# Admin Tools: EDGE^R Browser

## Training Videos (Cont.):

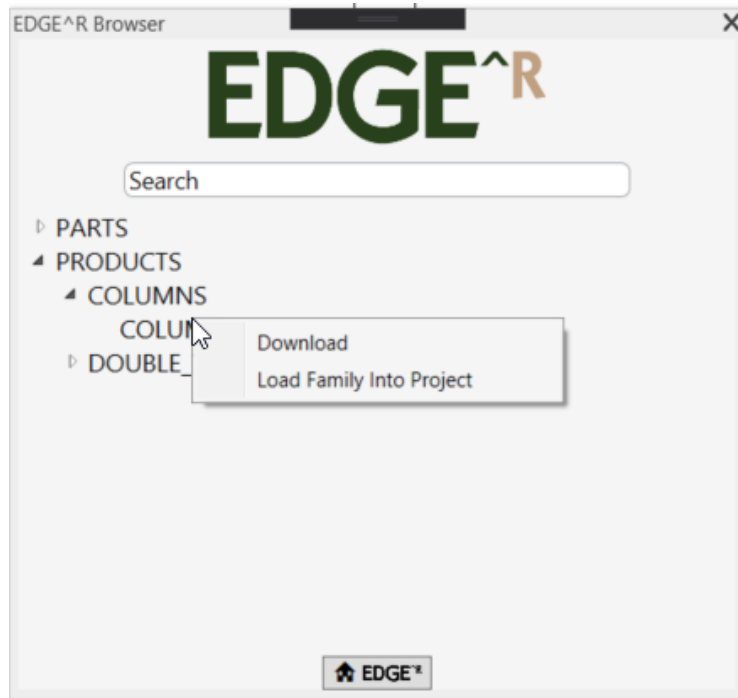


- 1) Play
- 2) Pause
- 3) Stop
- 4) Mute
- 5) Change Video Quality
- 6) Download Video in the currently selected quality
- 7) Pop Out Video to separate window
- 8) Video Slider

To return to the previous window, the user can select the Back button, or they can hit the Home button to go back to the Main Menu.

# Admin Tools: EDGE^R Browser

## Families:



By selecting the Families option on the Main Menu, the user can browse for available EDGE^R families based on their current Revit year. There are two available options for families: loading the family into the project or downloading to the user's PC.

Loading the family into the project can be accomplished by either left clicking on a family name or right clicking to bring up the Family menu and selecting "Load Family Into Project." Downloading the family via the right click menu will by default save the selected family to the user's PC.

# Admin Tools: EDGE^R Browser

## Families (Cont.):

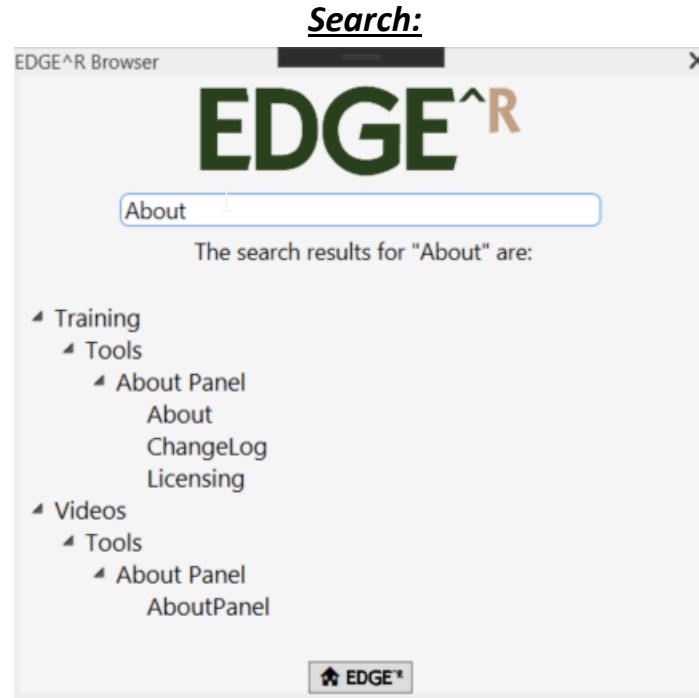
Please select the type of COLUMN you wish to import:

Type	Precaster	DIM_WIDTH (Feet)	DIM_DEPTH (Feet)	CONTROL_MARK	IDENTITY_DESCRIPTION_SHORT	IDENTITY_DESCRIPTION	MANUFACTURER_PLANT_ID	MANUFACTURER_PLANT_DESCRIPTION	CON
16" X 16"	PRECASTER	1'-4"	1'-4"	CLXX	CLXX	PRECAST CONCRETE COLUMN	NA	NA	COLI
18" X 18"	PRECASTER	1'-6"	1'-6"	CLXX	CLXX	PRECAST CONCRETE COLUMN	NA	NA	COLI
20" X 20"	PRECASTER	1'-8"	1'-8"	CLXX	CLXX	PRECAST CONCRETE COLUMN	NA	NA	COLI
24" X 24"	PRECASTER	2'-0"	2'-0"	CLXX	CLXX	PRECAST CONCRETE COLUMN	NA	NA	COLI
24" X 32"	PRECASTER	2'-0"	2'-8"	CLXX	CLXX	PRECAST CONCRETE COLUMN	NA	NA	COLI
24" X 33"	PRECASTER	2'-0"	2'-9"	CLXX	CLXX	PRECAST CONCRETE COLUMN	NA	NA	COLI
24" X 34"	PRECASTER	2'-0"	2'-10"	CLXX	CLXX	PRECAST CONCRETE COLUMN	NA	NA	COLI
28" X 28"	PRECASTER	2'-4"	2'-4"	CLXX	CLXX	PRECAST CONCRETE COLUMN	NA	NA	COLI
30" X 30"	PRECASTER	2'-6"	2'-6"	CLXX	CLXX	PRECAST CONCRETE COLUMN	NA	NA	COLI
32" X 32"	PRECASTER	2'-8"	2'-8"	CLXX	CLXX	PRECAST CONCRETE COLUMN	NA	NA	COLI
33" X 33"	PRECASTER	2'-9"	2'-9"	CLXX	CLXX	PRECAST CONCRETE COLUMN	NA	NA	COLI
34" X 34"	PRECASTER	2'-10"	2'-10"	CLXX	CLXX	PRECAST CONCRETE COLUMN	NA	NA	COLI

< Select All Deselect All Confirm Cancel >

Upon loading a family into the project, if the family has multiple types, the user is prompted to select the type(s) that they wish to load into their active project. Select multiple family types by dragging the mouse across different rows or by holding the Ctrl key plus clicking. Clicking the Confirm button will load the selected family types into the project.

# Admin Tools: EDGE^R Browser



To search, simply enter a term into the search bar and press the Enter key. If the entered term matches any available items, the results for either the Manuals, Videos, or Families categories will appear. The results will offer the same functionality as previously described for Manuals, Videos, and Families.

## **Additional Information:**

- A stable internet connection is required to access most of the content within the EDGE^R Browser.
- The EDGE^R Browser can be docked in multiple places throughout the current Revit window much like the Properties menu and Project Browser. The EDGE^R Browser can also be placed on an entirely different screen than the Revit session if desired.
- By clicking the EDGE^R Browser button in the Admin dropdown of the EDGE^R toolbar, you can toggle the Browser on or off.
- Clicking the EDGE^R logo at the top of the pane will bring the user back to the main menu.