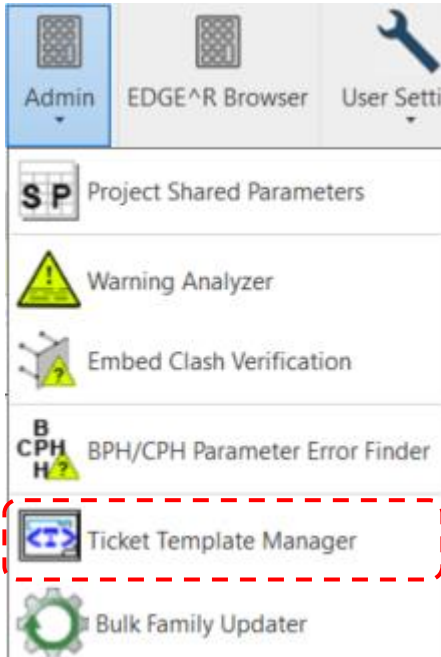


# Admin Tools: Ticket Template Manager



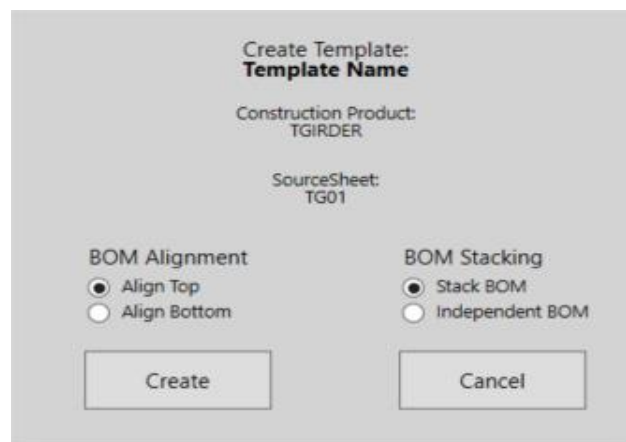
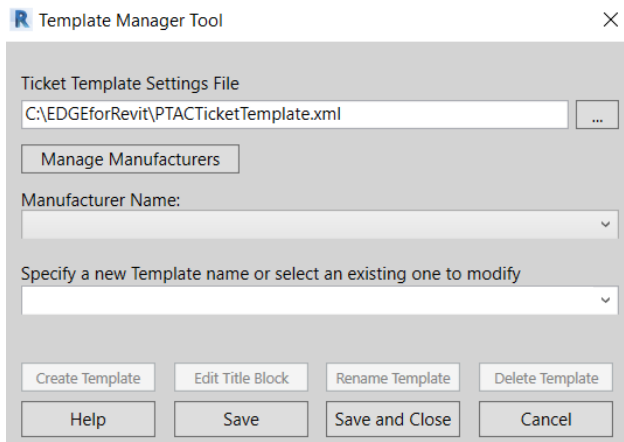
## Programmed Result of Tool:

This tool will create a template for successive tickets to be created from by capturing the user developed ticket attributes such as the views, view locations, view templates, schedule locations, and schedule configurations. This tool also allows you to modify existing ticket templates.

## Steps to Create a Ticket Template:

*This tool will create a template for corresponding project shop tickets to be made.*

- 1) User creates a shop ticket as done previously in EDGE, by "Creating Assembly Views", dragging the views on the sheet, and running the necessary BOM's.
- 2) User may add Legends for "standard" details for the product type.
- 3) User will add the "Template End Pattern" Legend in the appropriate location on the shop ticket if desired.
- 4) User will then click the Ticket Template Manager button under the admin tab.
- 5) User determines the file path in which all settings will be stored. This corresponds to the file path in the EDGE Preferences file.
- 6) User will select a manufacturer using the Manufacturer Name drop-down tab.
- 7) User then names the new ticket template. Note: Using an existing template name will overwrite the previous template version.
- 8) User will click the Create Template button to create a new template.
- 8) User then determines the BOM configuration. If the BOM should be extended from the top down, the user will choose "Align Top". If the BOM should be stacked into a single schedule, the user will select "Stack BOM".

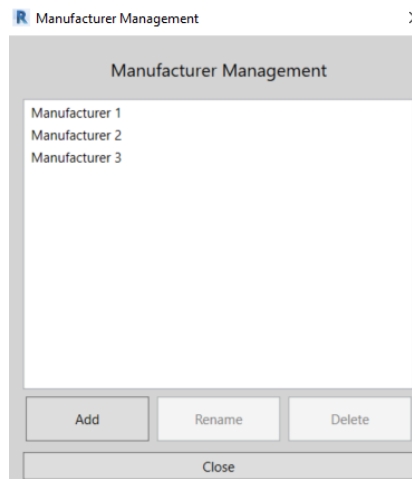


# Admin Tools: Ticket Template Manager

## Manage Manufacturers:

*This tool allows the user to create, rename, and delete manufacturers.*

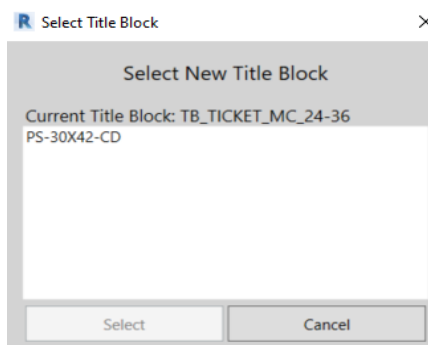
- The user will open this tool by clicking the Manage Manufacturers button.
- To add a new manufacturer, click the Add button and enter the name of the new manufacturer.
- To rename a manufacturer, select the existing manufacturer in the list then click Rename.
  - The manufacturer will be renamed for all ticket templates that currently exist for that manufacturer.
- To delete a manufacturer, the user must select an existing manufacturer then click Delete.
  - The user will be given the option to delete all templates associated with this manufacturer or to keep the templates which would leave those templates disassociated from a specific manufacturer.
- The user will not be able to click Rename or Delete without selecting a manufacturer first.
- The user must click also Save or Save and Close in the main window to save these changes.



## Edit Title Block:

*This tool allows the user to change the title block saved to an existing template.*

- 1) Open this tool by first selecting a template from the drop-down, then click the Edit Title Block button.
- 2) Click the new title block from the list and press the Select button.
- 3) The user must click also Save or Save and Close in the main window to save these changes.



# Admin Tools: Ticket Template Manager

## **Rename Template:**

*This tool allows the user to rename existing ticket templates.*

- 1) The Rename Template button will be disabled until a template has been selected.
- 2) Select a template from the drop-down list then click Rename Template.
- 3) The user must click also Save or Save and Close in the main window to save these changes.

## **Delete Template:**

*This tool is used to delete existing ticket templates.*

- 1) The Delete Template button will be disabled until a template has been selected.
- 2) Select a template from the drop-down list then click Delete Template.
- 3) The user must click also Save or Save and Close in the main window to save these changes.

## **Known Limitations:**

- The active view must be an assembly sheet view to create a new ticket template.
  - You can be in any view to just modify manufacturers or existing templates.
- The Create Template and Edit Title Block buttons will be disabled while in the family editor.
- View rotations achieved by using the Rotate on Sheet parameter will not be recorded. However, manual rotation of the view's crop region is eligible to be saved to the ticket template.
- Assembly views used for the ticket template should not contain any annotation type elements (ex. dimensions, callouts, text) to ensure that the view will get saved correctly to the ticket template file.