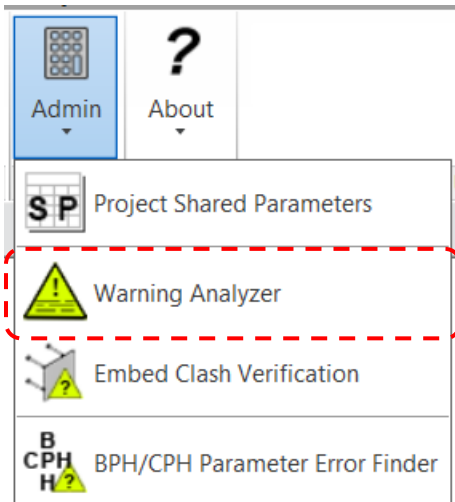


# Admin Tools: Warning Analyzer



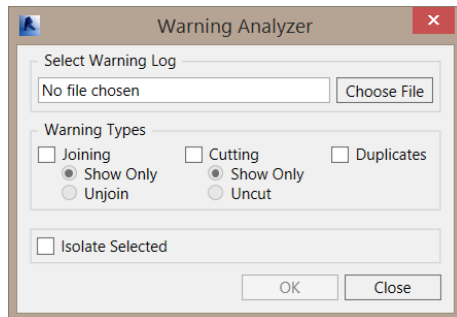
## **Programmed Result of Tool:**

This tool prompts the user to locate an exported Warning Log and then allows the user to highlight and/or isolate typical warnings within the Revit Model. Typical issues include Join Geometry and Cut Geometry errors as well as duplicate elements within the same location. This tool will also allow the user to remedy the warnings by unjoining or uncutting geometry.

## **Steps to Perform tool Operation:**

*The user clicks the tool and then opens the exported warning file. The user then chooses the types of warnings to display and/or isolate. The user chooses to Show the elements with the warnings or to correct the issue (unjoin or uncut).*

Select a Warning Log and choose display options



1) User clicks the Warning Analyzer icon.

2) The user specifies the exported warning log, and the warning types to show and/or undo.

## **Known Limitations:**

- This tool requires an up-to-date warning log to be exported to work properly. Out of date warning logs will generate errors due to missing Revit elements within the database.