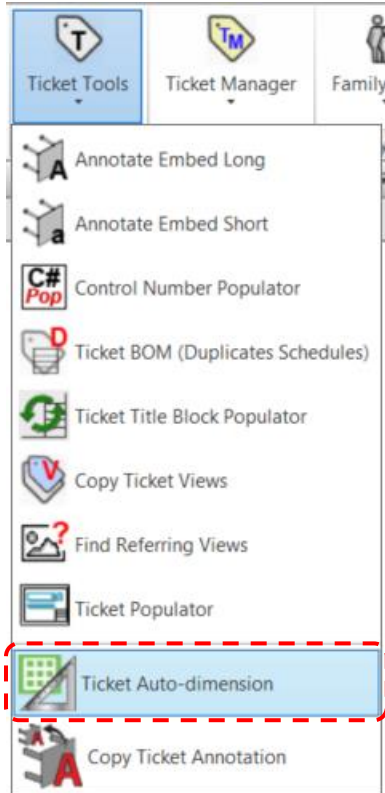


Ticket Tools: Ticket Auto-Dimension



Programmed Result of Tool:

Ticket Auto-Dimension will help you rapidly and accurately dimension components on your shop tickets. The user can quickly select an element of interest, take advantage of automatic selection of similar elements, and have the dimension string placed at the side of their choosing along with an appropriate count and annotation.

Steps to Perform tool Operation:

This tool will create a dimension for selected elements.

- 1) In a shop ticket view (must be in an active viewport, not the sheet), user starts Ticket Auto-Dimension tool from EDGE^R>Ticket Tools> Ticket Auto-Dimension.
- 2) The user then selects one of the elements within the assembly that they would like to dimension and decides whether to allow the tool to pre-select all similar (by family and type) elements in the view. User then selects/deselects desired elements (they must be of the same family/type as the originally selected element) and then presses "Finish" on the Revit Options Bar.
- 3) The user must then click above, below, or to the left or right of the Structural Framing element to place the dimension string.
- 4) Before the dimension string is placed, the user will first be asked if they want this dimension string to utilize the Equality Formula. Select either Yes or No.
- 5) The dimension string will then be placed on the side of the Structural Framing element specified in step 3. The tool also places the IDENTITY_DESCRIPTION_SHORT and the total count of the dimensioned elements out beside the dimension string.

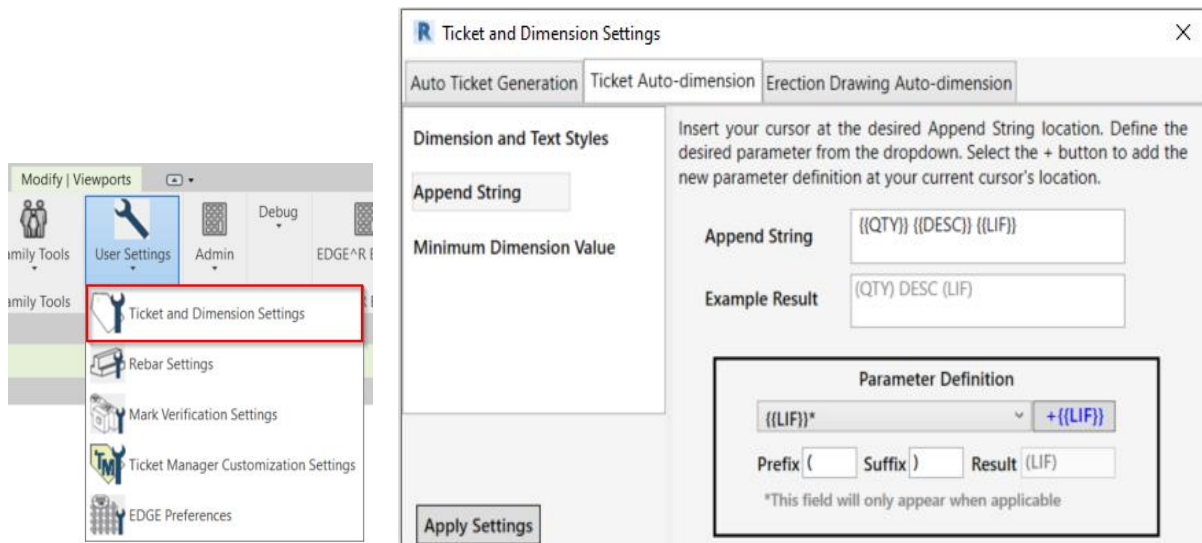
Known Limitations:

- Due to limitations of the Revit API, box/crossing selection of nested families is not possible. This is the reason that the tool offers to preselect similar elements in the view.
- Families to be dimensioned must contain model lines with the sub-category of "EdgeDimLines" These model lines should be aligned with the location of desired dimensioning for the element.

Ticket Tools: Ticket Auto-Dimension

Customization:

Dimension strings created by Ticket Auto-dimension tool can be customized using the Ticket and Dimension Settings under the User Settings tab.



- Dimension and Text Styles
 - From the dropdowns, select which families to use for append string text style and dimension string style.
- Append String
 - This tab allows you to build what the append string should look like for dimension strings placed by this tool.
 - Place your cursor at the desired location in the Append String field.
 - From the dropdown, select which parameter to add to the append string.
 - You can add prefixes and suffixes for the quantity, description, and location in form parameters in an append string.
 - The Result field will display what the selected parameter with its prefixes/suffixes looks like.
 - Selecting the + button will add the current parameter with its prefixes/suffixes to the current cursor's location in the Append String field.
 - The Example Result field displays what the append string would look like next to a dimension string.
 - If an element doesn't have a location in form parameter, then the LIF Parameter Definition does not apply and will not be included in the real append string.
- Minimum Dimension Value
 - Set the minimum spacing in feet and/or inches between like elements in a single dimension string. Any elements with spacing less than the defined minimum will be omitted from inclusion in the dimension string. These elements would still count toward the assigned Quantity value in the append string if Quantity was included.